

## Data tables: June 2012

---

Published August 2012

### Introduction

The functions of the Dental Board of Australia include:

- registering dentists, students, dental specialists, dental therapists, dental hygienists, oral health therapists and dental prosthetists
- developing standards, codes and guidelines for the dental profession
- handling notifications, complaints, investigations and disciplinary hearings
- assessing overseas trained practitioners who wish to practise in Australia
- approving accreditation standards and accredited courses of study.

The Board's functions are supported by [Australian Health Practitioner Regulation Agency](http://www.ahpra.gov.au) (AHPRA). For information about legislation governing our operations see [AHPRA's Legislation & Publications](http://www.ahpra.gov.au/Legislation-and-Publications.aspx) at <http://www.ahpra.gov.au/Legislation-and-Publications.aspx>

The Board has analysed its registration data and produced a number of statistical breakdowns about registrants to share with the profession and community. The Board shares these breakdowns regularly.

For more information on dental registration, please see the Board's website: <http://www.dentalboard.gov.au/Registration.aspx>

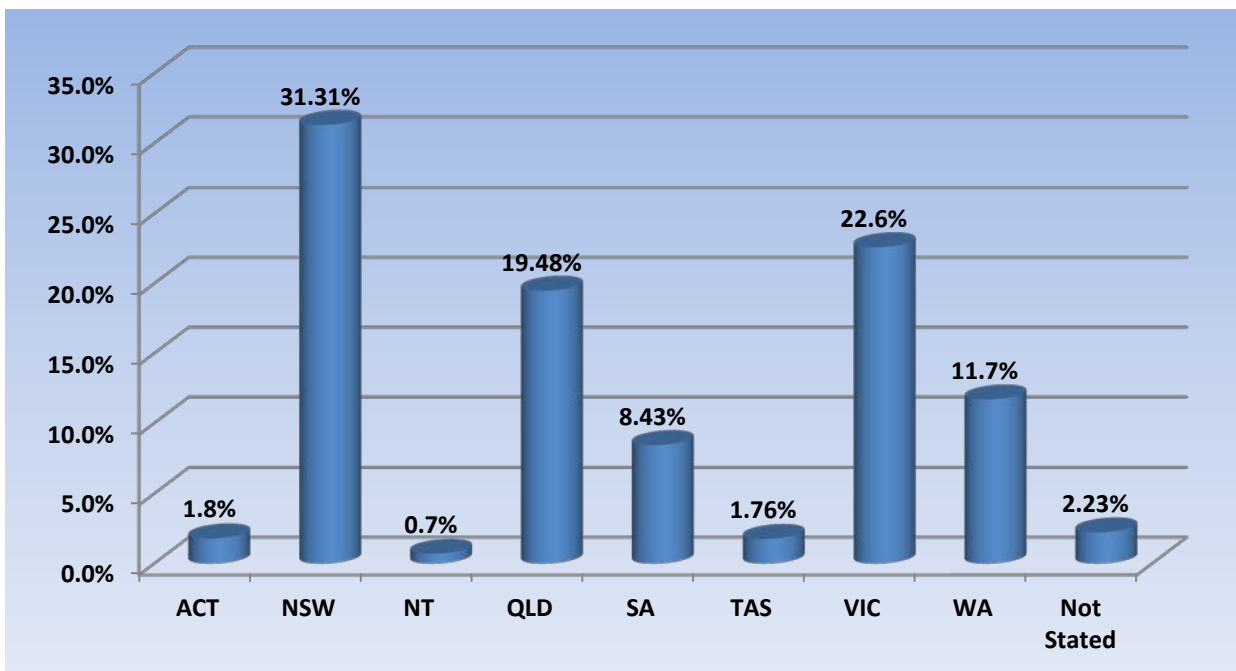
### Index of Tables

<b>Dental practitioners: State and Territory by Registration Type</b> .....	<b>2</b>
<b>Dental practitioners: Age by Registration Type</b> .....	<b>3</b>
<b>Dental practitioners: Gender by State and Territory by Registration Type</b> .....	<b>4</b>
<b>Dental practitioners: Endorsement Type by State and Territory</b> .....	<b>4</b>
<b>Dental practitioners: Registration Numbers by Division by State and Territory</b> .....	<b>4</b>

## Dental Practitioners: State and Territory by Registration Type

State	General	General and Specialist	Limited			Non-practising	Specialist	Total	% By State
			Postgraduate training or supervised practice	Public interest	Teaching or research				
ACT	303	39				1		343	1.8%
NSW	5,286	447	127	1	12	96	7	5,976	31.31%
NT	124	6			1	2		133	0.7%
QLD	3,334	289	36		17	42	1	3,719	19.48%
SA	1,419	131	37		8	11	3	1,609	8.43%
TAS	303	22	6			5		336	1.76%
VIC	3,761	366	87	1	4	88	6	4,313	22.6%
WA	1,995	143	41		1	51	2	2,233	11.7%
Not Stated	346	33	3			38	5	425	2.23%
<b>Total</b>	<b>16,871</b>	<b>1,476</b>	<b>337</b>	<b>2</b>	<b>43</b>	<b>334</b>	<b>24</b>	<b>19,087</b>	<b>100%</b>

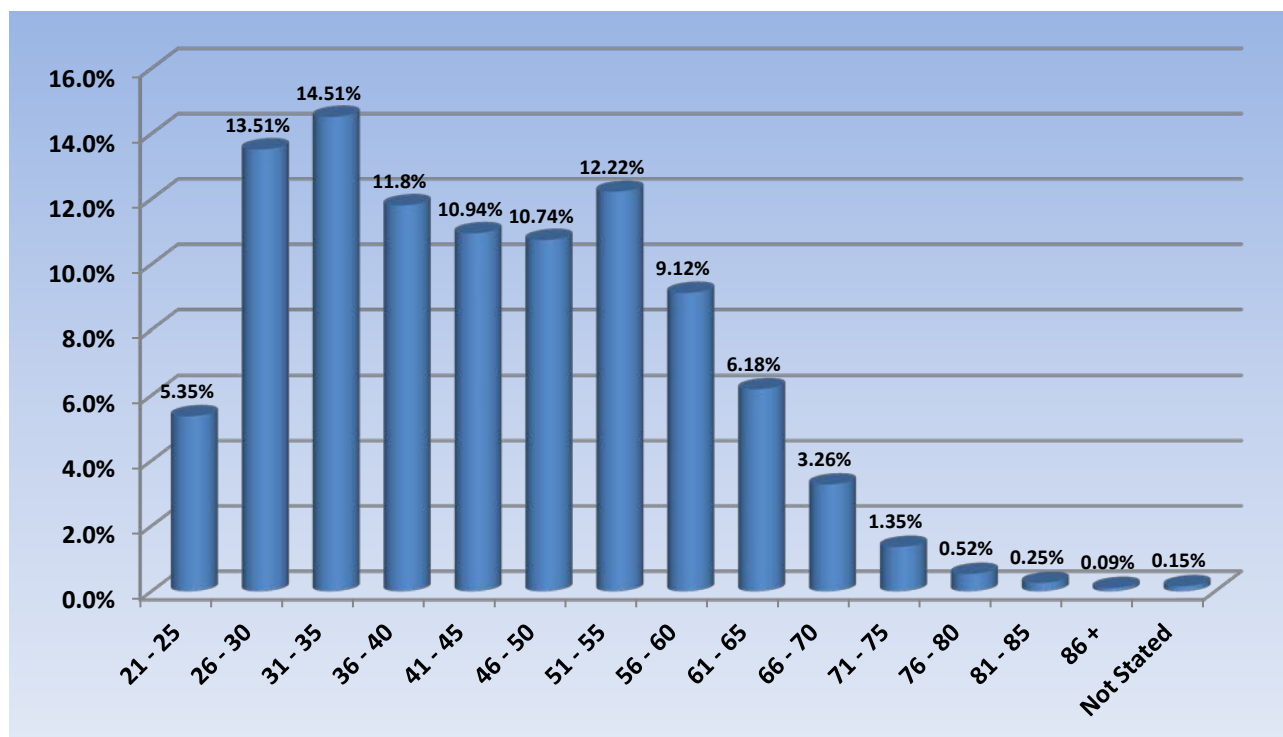
### % By State and Territory



## Dental Practitioners: Age by Registration Type

Age Group	General	General and Specialist	Limited			Non-practising	Specialist	Total	% By Age Group
			Postgraduate training or supervised practice	Public interest	Teaching or research				
21 - 25	1,011		3			7	1	1,022	5.35%
26 - 30	2,408	13	132		1	23	2	2,579	13.51%
31 - 35	2,399	166	137		13	46	8	2,769	14.51%
36 - 40	1,995	185	29		7	32	4	2,252	11.8%
41 - 45	1,844	172	28	1	8	31	5	2,089	10.94%
46 - 50	1,817	192	3	1	5	30	1	2,049	10.74%
51 - 55	2,052	238	1		4	36	1	2,332	12.22%
56 - 60	1,494	207	4		2	33		1,740	9.12%
61 - 65	992	147			2	38	1	1,180	6.18%
66 - 70	503	96				24		623	3.26%
71 - 75	204	38			1	14	1	258	1.35%
76 - 80	75	16				9		100	0.52%
81 - 85	37	5				6		48	0.25%
86 +	12	1				5		18	0.09%
Not Stated	28							28	0.15%
<b>Total</b>	<b>16,871</b>	<b>1,476</b>	<b>337</b>	<b>2</b>	<b>43</b>	<b>334</b>	<b>24</b>	<b>19,087</b>	<b>100%</b>

### % by Age Group



## Dental practitioners: Gender by State/Territory by Registration Type

Sex	State	General	General and Specialist	Limited			Non-practising	Specialist	Total Count	% By Sex By State
				Postgraduate training or supervised practice	Public interest	Teaching or research				
Female	ACT	168	4				1		173	0.91%
	NSW	2,269	96	72		8	47	4	2,496	13.08%
	NT	66				1			67	0.35%
	QLD	1,576	59	15		4	21		1,675	8.78%
	SA	751	32	21		5	6	2	817	4.28%
	TAS	54	1	1			3		59	0.31%
	VIC	1,786	101	53	1	2	45	4	1,992	10.44%
	WA	1,108	30	31		1	35	1	1,206	6.32%
	Not Stated	136	8				16		160	0.84%
	<b>Sub total</b>	<b>7,914</b>	<b>331</b>	<b>193</b>	<b>1</b>	<b>21</b>	<b>174</b>	<b>11</b>	<b>8,645</b>	<b>45.29%</b>
Male	ACT	135	35						170	0.89%
	NSW	3,000	350	55	1	4	49	3	3,462	18.14%
	NT	58	6				2		66	0.35%
	QLD	1,753	230	20		13	21	1	2,038	10.68%
	SA	639	99	16		3	5	1	763	4.0%
	TAS	150	19	5			2		176	0.92%
	VIC	1,969	265	34		2	43	2	2,315	12.13%
	WA	790	107	10			16	1	924	4.84%
	Not Stated	202	25	3			21	5	256	1.34%
	<b>Sub total</b>	<b>8,696</b>	<b>1,136</b>	<b>143</b>	<b>1</b>	<b>22</b>	<b>159</b>	<b>13</b>	<b>10,170</b>	<b>53.28%</b>
Not Stated	NSW	17	1						18	0.09%
	QLD	5		1					6	0.03%
	SA	29							29	0.15%
	TAS	99	2						101	0.53%
	VIC	6							6	0.03%
	WA	97	6						103	0.54%
	Not Stated	8					1		9	0.05%
	<b>Sub total</b>	<b>261</b>	<b>9</b>	<b>1</b>			<b>1</b>		<b>272</b>	<b>1.43%</b>
<b>Total</b>		<b>16,871</b>	<b>1,476</b>	<b>337</b>	<b>2</b>	<b>43</b>	<b>334</b>	<b>24</b>	<b>19,087</b>	<b>100%</b>

## Dental Practitioners: Endorsement Type by State and Territory

Endorsement	ACT	NSW	NT	QLD	SA	VIC	WA	Not Stated	Total
Conscious sedation	4	56	2	16	1	3	6	2	90
<b>Total</b>	<b>4</b>	<b>56</b>	<b>2</b>	<b>16</b>	<b>1</b>	<b>3</b>	<b>6</b>	<b>2</b>	<b>90</b>

## Dental Practitioners: Registration Numbers by Division by State/Territory

	ACT	NSW	NT	QLD	SA	TAS	VIC	WA	No PPP (2)	Total 2011- 2012
Dental Hygienist	47	351	7	119	223	16	175	277	15	1,230
Dental Hygienist and Dental Prosthetist (1)		1		1						2
Dental Hygienist and Dental Prosthetist and Dental Therapist (1)		1					1			2
Dental Hygienist and Dental Therapist (1)	10	57	7	177	74	2	131	52	3	513
Dental Prosthetist	14	414	5	225	54	52	328	89	2	1,183
Dental Therapist	17	241	16	208	106	55	176	341	1	1,161
Dentist	253	4,757	95	2,737	1,099	209	3,428	1,493	301	14,372
Dentist and Dental Hygienist(1)	1									1
Oral Health Therapist (3)	8	167	4	261	59	2	119	2	1	623
<b>Dental Practitioner</b>	<b>350</b>	<b>5,989</b>	<b>134</b>	<b>3,728</b>	<b>1,615</b>	<b>336</b>	<b>4,358</b>	<b>2,254</b>	<b>323</b>	<b>19,087</b>
Notes:										
1. Practitioners who hold dual registration.										
2. No principal place of practice (PPP) will include practitioners with an overseas address.										